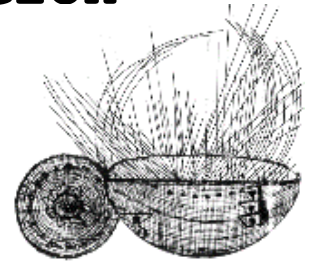


# Redwood Valley Rancheria Tribal EPA Newsletter

## September 2019 Edition



### Solid Waste

- Food Waste Reduction: On the Go
- EPA Project Officers Visit
- Dumpsite Clean up

### Transportation

- Work on Tank Road continues
- Foresters Inventory and Update

### Water Coordinator

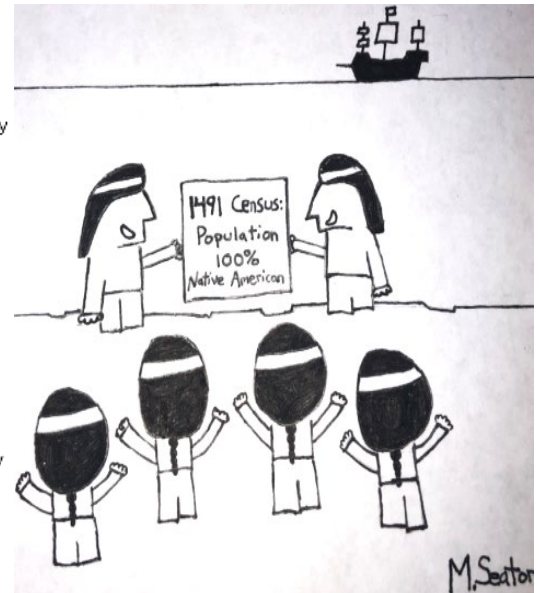
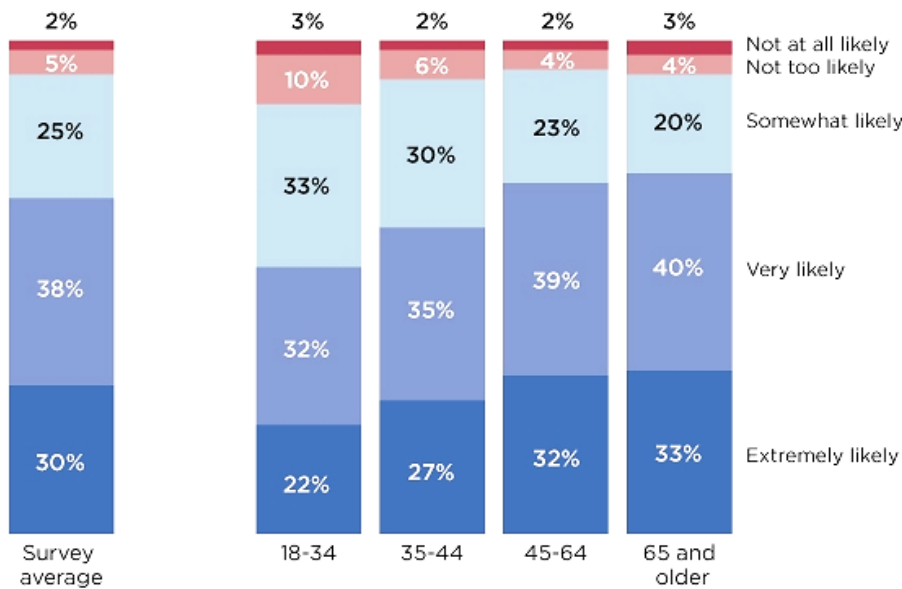
- Testing continues, learn more
- Leaks in our System?
- Wells update
- Site Visit
- Water supply during power shutoff

### Community News

- Census Info
- Wildfire Prevention Practices to Live By
- New Calendar
- ICWA and DSS



## 1. How Likely Would You Be to Fill Out the Census Form?



## 2. How the 2020 Census will invite everyone to respond

**Every household will have the option of responding online, by mail, or by phone.**


**Nearly every household** will receive an invitation to participate in the 2020 Census from either a postal worker or a census worker.


 **95%** of households will receive their census invitation in the mail.



**3. Length of time to complete the census form:**  
About 10 minutes.



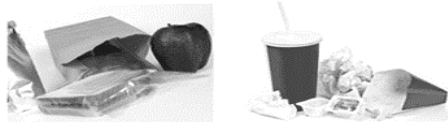
 **Almost 5%** of households will receive their census invitation when a census taker drops it off. In these areas, the majority of households may not receive mail at their home's physical location (like households that use PO boxes or areas recently affected by natural disasters).

 **Less than 1%** of households will be counted in person by a census taker, instead of being invited to respond on their own. We do this in very remote areas like parts of northern Maine, remote Alaska, and in select American Indian areas that ask to be counted in person.

**Reducing Food Waste Away from Home** According to the EPA, the typical American school kid creates 67 pounds of discarded lunch packaging waste per school year. That's more than 18,000 pounds of plastic, paper, and other non-food materials for just one average-sized elementary school (268.6 students). (Full article @ <https://ecocycle.org/component/content/article/32-general/blog/479-waste-free-lunch>)

Work lunches aren't exempt from the waste factor either, especially since adults often grab lunch—and all kinds of one-time-use items—on-the-go.

The goal is to make our lunches look less like this...



... and more like this ...



## Waste-Free Lunch Essentials

For a small one-time investment, [these reusable items can save you about \\$417 annually!](#)

### Tool # 1: A Reusable Lunchbox

Ditch the brown bags for a safe, non-toxic reusable lunch carrier.

### Tool # 2: Safe, Reusable Food Containers

Say bye-bye to single-serving disposables and to-go containers and hello to all the wonderful reusable options out there like stainless steel, Pyrex®, and non-toxic plastic containers. Plus, you'll save money by buying in bulk and portioning out your own snacks.

### Tool # 3: Safe, Reusable Drink Containers

Buy drinks in bulk and fill up your own reusable bottles to avoid non-recyclable foil drink pouches and other one-time-use bottled drinks.

### Tool # 4: Reusable Sandwich Wraps and Snack Bags

You'll never need to buy another plastic baggie again with options such as organic cloth and safe (BPA-free) plastic sandwich wraps and snack pouches.

### Tool # 5: Utensils and Napkins

Reusable plastic sporks, sustainable bamboo utensils, and organic cotton napkins are just a few options.



## Avoiding Poison Plastics

**When you're purchasing reusable lunch boxes and plastic bags... Watch out for PVC.**

Many lunch sacks have a PVC lining to help with insulation. Avoid products that say "vinyl" or have the letter "V" with a #3 recycling symbol on them. If you can't find a label, check with the manufacturer.

**When you're purchasing a reusable water bottle...**

Watch out for BPA. This known hormone-disrupter has made its way into all kinds of products and is often found in plastic drink bottles and in the liners of aluminum bottles.

Your safest bet: Purchase an unlined/uncoated stainless steel water bottle -- they won't leach.



## For Adults and Young Adults

For a durable reusable vessel look at glass mason jars. They're microwave safe and come in many sizes. For hot drinks like coffee you may want a sleeve, maybe an old wool sock, to prevent burns. Many of them will fit nicely in your vehicle cup holder as well.

## Wildfire Prevention: Are You Doing the Right Thing, The Wrong Way?

Whether working to create defensible space around your home, just mowing the lawn, or pulling your dirt bike over to the side of the road, if you live in a wildland area you need to use all equipment responsibly. Lawn mowers, weed-eaters, chain saws, grinders, welders, tractors, and trimmers can all spark a wildland fire. Do your part, the right way, to keep your community fire safe.

Here's how to do it the right way

### Mowing

Mow before 10 a.m., but never when it's windy or excessively dry. Lawn mowers are designed to mow lawns, not weeds or dry grass. Metal blades striking rocks can create sparks and start fires. Use caution.

### Spark Arresters

In wildland areas, spark arresters are required on all portable gasoline-powered equipment. This includes tractors, harvesters, chainsaws, weed-eaters and mowers.

- Keep the exhaust system, spark arresters and mower in proper working order and free of carbon buildup.
- Use the recommended grade of fuel and don't top it off.

### Equipment Use

In wildland areas, grinding and welding operations require a permit and 10 feet of clearance. Keep a shovel and a fire extinguisher ready to use.

- Don't drive your vehicle onto dry grass or brush. Hot exhaust pipes and mufflers can start fires that you won't even see – until it's too late!
- Keep a cell phone nearby and call 911 immediately in case of fire.

### Environment

To protect water quality, do not clear vegetation near waterways to bare soil. Vegetation removal can cause soil erosion especially on steep slopes. Always keep soil disturbance to a minimum.

Find this article and much more at: <https://www.readyforwildfire.org/prevent-wildfire/equipment-use/>

## EPA Site Visit



An annual site visit from our Region 9 Office and Project Officers was on August 15<sup>th</sup>. Marisol, Deirdre, and Kate (rocking the official white shirt) stand left to right above, discussed our PPG (performance partnership grant) like GAP, CWA106 and CWA319. Topics discussed were; data management, climate adaption planning, budget, quarterly clean-up events, Tribal Environmental Plan, drinking water, and waste water. This dialogue was followed by a tour of the Rancheria.



## Water Coordinator's Corner with Steve Elliott and Ian Osipowitsch

This interview was done shortly following the EPA site visit, August 20th.

**Ian:** What did you feel you gained from the site with the EPA?

**Steve:** A better understanding of how the grants work overall. How to use commitments with other projects, how to modify our work plan if needed.

**Ian:** What water sampling is under way?

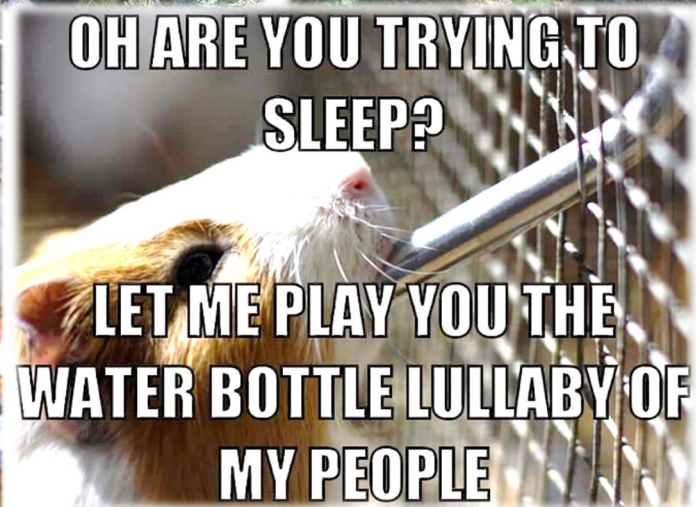
**Steve:** We recently tested the creek for Turbidity (cloudiness of the water), Dissolved Oxygen (oxygen available for organisms to live), PH (base or acidic water). For drinking water, we tested for lead and copper and also disinfection by-products. Disinfection by-products are an outcome that could take place under certain water conditions and could be harmful.

**Ian:** What's going on with well sounding and leak detection?

**Steve:** The well sounding is the measuring of the wells capacity to deliver water and to find out how fast the water table is lowering in that particular area. We test 3 wells currently. The leak detection is a process of listening with highly sophisticated correlating equipment. It's like having a bionic ear to the water mains. We'll have a report back here in the near future and move forward addressing issues found in the report.

**Ian:** If/when we have a power shut-off will our drinking water be safe and how long until we are out of water?

**Steve:** In the event electricity goes out, I was told from Redwood Valley Water District that if we all conserve water we will be have water for three to five days. It's always a good practice to conserve water. Anything that saves water is helping the entire water system. Thanks everyone for helping with lead and copper testing, results are coming soon and will be shared with the community.





## Dumpsite

This is a recent illegal dump site that was found and cleaned up on August 20<sup>th</sup>. This site not only is a nuisance; it also is a potential fire hazard, impacts the environment, wildlife, nearby little bird creek, and young children that stumble upon it. Please help us keep the community clean by picking up your trash, and recycling and disposing of it properly.

- Tribal EPA Department



## Transportation & Tank Road Update

Currently there is an effort to increase safety on the road by installing guardrails. The process is being bogged down by requirements regarding the Rancheria's roads inventory, which is being sorted out. Similarly, in the process of approval is the emergency exit route going north from RVR at the cul-de-sac. We are reaching out to the neighboring landowner as well as working through the planning stages. Thank you for your patience.

## When you eco-friendly, but also eco-friendlyless



## Tribal EPA Director Trip to the Tribal Lands and Environment Forum (TLEF):

I recently attended the Tribal Lands and Environment Forum in Palm Springs, CA. It was a great conference that discussed how to use our GAP and CWA grants for activities that can improve our individual programs such as small scale composting programs, solar projects large and small, using CWA 319 for invasive species removal, leveraging GAP funds for Climate Adaptation, and more. I have brought back a lot of great information that will help not only myself but our EPA Department continue to work on improving our Environmental programs.

There was much more that discussed other programs and funding available like brownfields projects, water projects, Recycling programs, utilities and more.

All information brought back from this conference will be available in the Tribal Office to view.

-Eileen Nuñez

## Foresters Preliminary Findings

Currently we have two Foresters working on Inventorying the forest and updating our Forest Management Plan. We have had a meeting to go over their first few days of field work. What they have discovered is a hidden wetland/pond towards the top of our property that we will be doing more exploring of, along with updates on vegetation re growth and the health of the oaks. So far a lot has come back from the fire but we also have a large amount of dead trees that need to be removed. This is just their first few days and will be doing more field work and writing up the Forest Management Plan that will offer recommendations for potential revegetation, tree removal, and more. As we get more information we will share it with the community and work on next steps to maintain a healthy forest.



As of August 19<sup>th</sup> school is back in session. This change from the summer schedule includes an afternoon bus which will drop children off in front of Building A.



Me when im driving through a school zone



Please slow down when children are present.  
Message brought to you by  
Tribal Transportation  
Department.

# REDWOOD VALLEY RANCHERIA LEARNING CENTER

## SEPTEMBER 2019

\*DATES AND TIMES BELOW SUBJECT TO CHANGE\*

SUNDAY	MONDAY	TUESDAY	WEDNESDAY	THURSDAY	FRIDAY	SATURDAY
1	2 <u>CLOSED for Labor Day Holiday</u>	3	4 <u>Elderberry Syrup Workshop</u> 3:00-5:00	5	6	7
8	9 <u>Staff Meeting</u> 10:00-11:00	10 <u>PEC Meeting</u> 5:30	11 <u>Angelica Syrup Workshop</u> 3:00-5:00	12 <u>Staff Computer Training</u> 9:00 - 10:00	13 <u>ICWA Coalition</u> 11:30 – 2:30	14 <u>Full Moon</u>
15 <u>Tribal Council Meeting - Building A</u> 10:00	16 <u>Staff Meeting</u> 10:00-11:00	17 <u>BIA Meeting</u> 8:00-5:00	18 <u>Family Movie Day</u> 2:00-5:00	19 <u>Staff Computer Training</u> 9:00 - 10:00 <u>Utility Board Meeting</u> 5:00 - Building A	20	21 <u>Ukiah Valley Russian River Clean Up @ Low Gap Park</u> 8-11:30am (sturdy shoes required)
22	23 <u>Staff Meeting</u> 10:00-11:00 <u>First Day of Autumn</u>	24 <u>Staff Computer Training</u> 9:00 - 10:00	25	26 <u>Staff Computer Training</u> 9:00 - 10:00	27 <u>CLOSED for California Indian Day Holiday</u>	28
29	30 <u>Staff Meeting</u> 10:00-11:00					

# REDWOOD VALLEY RANCHERIA LEARNING CENTER

## SEPTEMBER 2019

*\*DATES AND TIMES BELOW SUBJECT TO CHANGE\**

3250 Road I, Building B, Redwood Valley CA 95470, Phone: (707) 485-0361

Library Hours	Monday-Friday	9:00 AM - 4:30 PM
Adult/Elder Quiet Reading Hours	Monday-Friday	9:00 AM - 1:00 PM
Computer Lab Hours	Monday-Friday	9:00 AM - 4:30 PM
Adult/Elder Computer Lab Hours	Monday-Friday	9:00 AM - 1:00 PM
Fatherhood/Motherhood Is Sacred	Tuesdays	5:30 PM - 7:00 PM
Red Road Meeting	Thursdays	6:00 PM
Tutoring	Monday - Friday	After School Dismissal

### Learning Center Staff:

Jasmine Billy, Education Coordinator

Erica Carson, Jr., NAFFA Certified Facilitator

Carol Gottfried, PYCCSP Tutor

Bethany Mann, Tutor

Martin Martinez, III, Director of Social Services

Chris Piekarski, Indian Child Welfare Act Coordinator

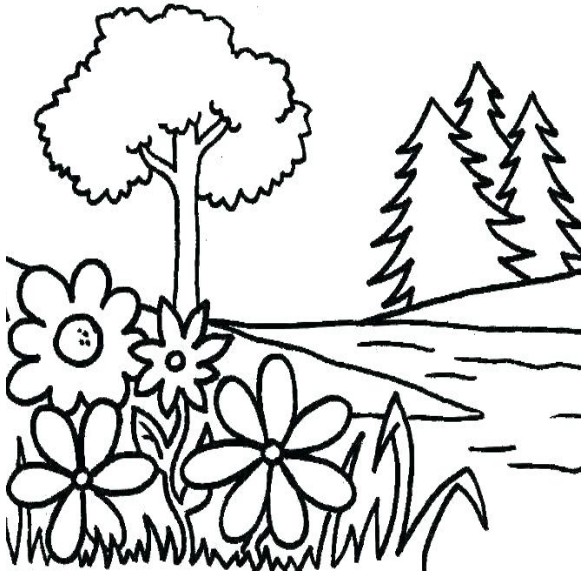
*To reserve the Learning Center for events please contact RVR Secretary Isabel Nunez: (707) 485-0361*



A flock of 13 turkeys, *Meleagris gallopavo*, has been seen during mornings at RVR. Flocks can range from 5 to 50 individuals and may have a home range of between 370 and 1300 acres, according to the National Wild Turkey Association. Hear their many sounds at [www.nwtf.org/hunt/wild-turkey-basics/turkey-sounds](http://www.nwtf.org/hunt/wild-turkey-basics/turkey-sounds)

### Tribal Environmental Protection Department Challenge

Using a pencil, circle all 10 words. Add color to the picture with crayons, color pencils, or markers. Then submit a photo of you proudly holding up the page to [recycling@rvrpomo.net](mailto:recycling@rvrpomo.net) along with your name, age, and date for the chance to appear in a small shout-out in the next TEPA Newsletter. Good Luck!



K	O	T	F	R	Y	E	M	N	R
C	O	N	S	E	R	V	E	P	E
W	U	T	R	C	N	Q	A	P	D
O	I	J	W	Y	P	E	I	F	U
H	B	N	U	C	V	O	R	N	C
O	X	Y	D	L	W	C	Q	G	E
R	E	U	S	E	A	L	Q	Y	Y
A	K	I	O	V	T	E	A	C	A
U	W	L	I	L	E	A	P	L	P
G	T	G	L	C	R	N	C	W	A

AIR  
 CLEAN  
 CONSERVE  
 ENERGY  
 RECYCLE  
 REDUCE  
 REUSE  
 SOIL  
 WATER  
 WIND

Name: \_\_\_\_\_ Age: \_\_\_\_\_ Date: \_\_\_\_\_

Redwood Valley Rancheria  
 3250 Road I,  
 Redwood Valley, CA 95470

